

Delegated Decision

Rock Street, Oldham – Amendments to Traffic Orders

Report of: Deputy Chief Executive – People and Place

Officer contact: Alister Storey, Traffic Engineer
Ext. 5766

1 October 2019

Purpose of Report

The purpose of this report is to consider revisions to the existing parking, waiting and loading restrictions on Rock Street, Oldham to aid the flow of traffic along the route and reduce congestion at the junction of Rock Street and Lord Street.

Recommendation

It is proposed that the existing Loading Bay and Disabled Parking bays are removed and new restrictions allowing for extra Disabled Parking bays and new No Waiting/Loading at any time are introduced. The proposed restrictions are detailed in the schedules at the end of this report.

Rock Street, Oldham – Amendments to Traffic Orders

1 Background

- 1.1 Since the demolition of the former Council Sports Centre and the creation of the new surface pay and display car park the volume of traffic using Rock Street has increased leading to congestion at the Lord Street junction.
- 1.2 Observations on site have identified issues with the existing on street parking and loading measures that need addressing. When vehicles are parked in certain bays, they cause restrictions to traffic flow on Rock Street which then impacts the Lord Street junction.
- 1.3 The existing disabled parking bay on the nearside as you enter Rock Street is located too close to the junction and has not been installed at the correct size to correspond with the current Traffic Order.
- 1.4 The existing loading only bay on the offside is primarily used by blue badge holders as an extra disabled parking bay and not for loading. When vehicles are parked in both these bays it narrows the useable carriageway considerably leading to congestion.

2 Options/Alternatives

- 2.1 Option 1: To approve the recommendation
- 2.2 Option 2: Not to approve the recommendation

3 Preferred Option

- 3.1 The preferred option is Option 1

4 Justification

- 4.1 In view of the restrictive parking taking place on Rock Street, it is felt that the existing loading bay and disabled parking bay should be removed and new restrictions introduced in accordance with the drawing number 47/A4/1541/2.

5 Consultations

- 5.1 G.M.P. View - The Chief Constable has been consulted and has no objection to this proposal.
- 5.2 T.f.G.M. View - The Director General has been consulted and has no comment on this proposal.
- 5.3 G.M. Fire Service View - The County Fire Officer has been consulted and has no comment on this proposal.

- 5.4 N.W. Ambulance Service View - The County Ambulance Officer has been consulted and has no comment on this proposal.

6 **Comments of St Mary's Ward Councillors**

- 6.1 The Ward Councillors have been consulted and no comments were received.

7 **Financial Implications**

- 7.1 The cost of introducing the Order is shown below:-

	£
Advertisement of Order	1,200
Introduction of Road Markings	500
TOTAL	1,700
Annual Maintenance Costs (calculated July 2019)	100

- 7.2 The advertising, road marking and signage costs of £1,700 will be funded from the Highways Operations – Unity budget.

- 7.3 The annual maintenance costs estimated at £100 per annum will be met from the Highways Operations budget. If there are pressures in this area as the financial year progresses, the Directorate will have to manage its resources to ensure that there is no adverse overall variance at the financial year end.
(Nigel Howard)

8 **Legal Services Comments**

- 8.1 Section 32 (1)(b) of the Road Traffic Regulation Act 1984 gives local authorities the power by order to authorise the use as a parking place of any part of a road within their area. It must appear to the Council that the parking places are necessary for the purpose of relieving or preventing congestion of traffic. Under section 35 of the Act, the Council may impose restrictions on the use of the parking places and in particular, the vehicles which may be permitted to use them.

- 8.2 Section 45 of the Act allows the Council to make an order designating parking places on highways for vehicles of any class specified in the order and the Council may make charges for vehicles left in a parking place so designated. In determining what parking places are to be designated under section 45, the Council must consider both the interests of traffic and of owners and occupiers of adjoining properties. In particular the Council must have regard to:
- a) the need for maintaining the free movement of traffic
 - b) the need for maintaining reasonable access to premises; and
 - c) the extent to which off street parking accommodation is available in the neighbourhood or the provision of such parking accommodation is likely to be encouraged there by the designation of parking places under section 45.

- 8.3 In addition to the above, under section 122 of the Act, it shall be the duty of the Council so to exercise the functions conferred on them by the Act as to secure the expeditious, convenient and safe movement of vehicular and other traffic (including pedestrians) and the provision of suitable and adequate parking facilities on and off the highway. Regard must also be had to the desirability of securing and maintaining reasonable access to premises, the effect on the amenities of any locality affected and the importance of regulating and restricting the use of roads by heavy commercial vehicles so as to preserve or improve the amenities of the areas through which the roads run, the strategy produced under section 80 Environmental Protection Act 1990 (the national air quality strategy), the importance of facilitating the passage of public service vehicles and of securing the safety and convenience of persons using or desiring to use such vehicles and any other matters appearing to the Council to be relevant. (A Evans)

9 Co-operative Agenda

- 9.1 In respect of this proposal there are no Co-operative issues or opportunities arising and the proposals are in line with the Council's Ethical Framework.

10 Human Resources Comments

- 10.1 None.

11 Risk Assessments

- 11.1 None.

12 IT Implications

- 12.1 None.

13 Property Implications

- 13.1 None.

14 Procurement Implications

- 14.1 None.

15 Environmental and Health & Safety Implications

- 15.1 Energy – Nil.

- 15.2 Transport – Nil.

- 15.3 Pollution – Nil.

- 15.4 Consumption and Use of Resources – Nil.

15.5 Built Environment – Minor alteration to the visual appearance of the area.

15.6 Natural Environment – Nil.

15.7 Health and Safety – Nil.

16 Equality, community cohesion and crime implications

16.1 By removing obstructive parking access along the highway and visibility at road junctions will be improved and meet the aspirations of drivers.

17 Equality Impact Assessment Completed?

17.1 No.

18 Key Decision

18.1 No.

19 Key Decision Reference

19.1 Not applicable.

20 Background Papers

20.1 The following is a list of background papers on which this report is based in accordance with the requirements of Section 100(1) of the Local Government Act 1972. It does not include documents which would disclose exempt or confidential information as defined by the Act:

None.

21 Proposal

21.1 It is proposed that a Traffic Regulation Order covering the waiting and parking restrictions along Robson Street be amended in accordance with the following schedule:

Schedule
Drawing Number 47/A3/1541/1

Delete from the Oldham Borough Council (Oldham Area) Consolidation Order 2003.

Part II Schedule 4

Column 1 Item No	Column 2 Length of Road	Column 3 Class of Vehicle	Column 4 Date and hours of operation	Column 5 Maximum period of Waiting	Column 6 No Return Within
(O555)	<u>Rock Street</u> (South side) From a point 8 metres east of Lord Street for a distance of 6.6 metres in an easterly direction and which has a width throughout of 1.8 metres	Disabled Persons Vehicle	24 hours daily	No limit	Not Applicable

Delete from the Oldham Borough Council (Oldham area) Amendment Order 2005.

Schedule 1

Column 1 Item No	Column 2 Length of Road	Column 3 Class of Vehicle	Column 4 Date and hours of operation	Column 5 Maximum period of Waiting
	<u>Rock Street</u> (South side) From a point 15 metres east of its junction with Lord Street to a point 37 metres east of Lord Street	Motor vehicle which is loading or unloading	24 hours daily	Not applicable

Schedule 3

Column 1 Item No	Column 2 Length of Road	Column 3 Duration	Column 4 Exemptions	Column 5 No Loading
	<u>Rock Street</u> (South side) From its junction with Lord Street for a distance 15 metres in an easterly direction	At Any Time	A,B1,B3,B4,C, E,K,J,K4	At any time

	<u>Rock Street</u> (South side) From a point 37 metres east of its junction with Lord Street to a point 123 metres east of that junction	Monday to Saturday	A,B1,B3,B4,C, F,G,J,K4,N,U	At any time
	<u>Rock Street</u> (South side) From a point 123 metres east of its junction with Lord Street to a point 155 metres east of that junction	At Any Time	A, B1, B2, B3, B4, C, F, G, J, K4, N	At any time
	<u>Rock Street</u> (North side) From its junction with Lord Street for a distance 8 metres in an easterly direction	At Any Time	A,B1,B3,B4,C, E,K,J,K4	At any time

Delete from the Oldham Borough Council Consolidation Order 2003 Amendment No 170 Order 2018.

Schedule 4
Part II Schedule 6

Parking Places (On Street)

Column 1	Column 2
Item No	Length of Road
(O529)	<u>Rock Street</u> (North side) From a point 14.6 metres east of its junction with Lord Street to a point 95 metres east of that junction

Schedule
Drawing Number 47/A3/1541/2

Add to the Oldham Borough Council (Oldham Area) Consolidation Order 2003.

Part I Schedule 1

Column 1 Item No	Column 2 Length of Road	Column 3 Duration	Column 4 Exemptions	Column 5 No Loading
	<u>Rock Street</u> (North side) From its junction with Lord Street for a distance 16.5 metres in an easterly direction	At Any Time	A,B1,B3,B4,C, K,E,K3	At any time
	<u>Rock Street</u> (South side) From its junction with Lord Street for a distance of 156 metres in an easterly direction	Monday to Saturday	A,B1,B3,B4,C, K,E,K3	At any time

Part II Schedule 4

Parking Places (Specified classes of Vehicle)


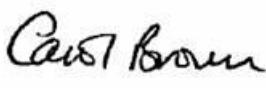
Column 1 Item No	Column 2 Length of Road	Column 3 Class of Vehicle	Column 4 Date and hours of operation	Column 5 Maximum period of Waiting	Column 6 No Return Within
	<u>Rock Street</u> (North side) From a point 29 metres east of its junction with Lord Street for a distance of 19.8 metres in an easterly direction and which has a width throughout of 1.8 metres	Disabled Persons Vehicle	24 hours daily	No limit	Not Applicable

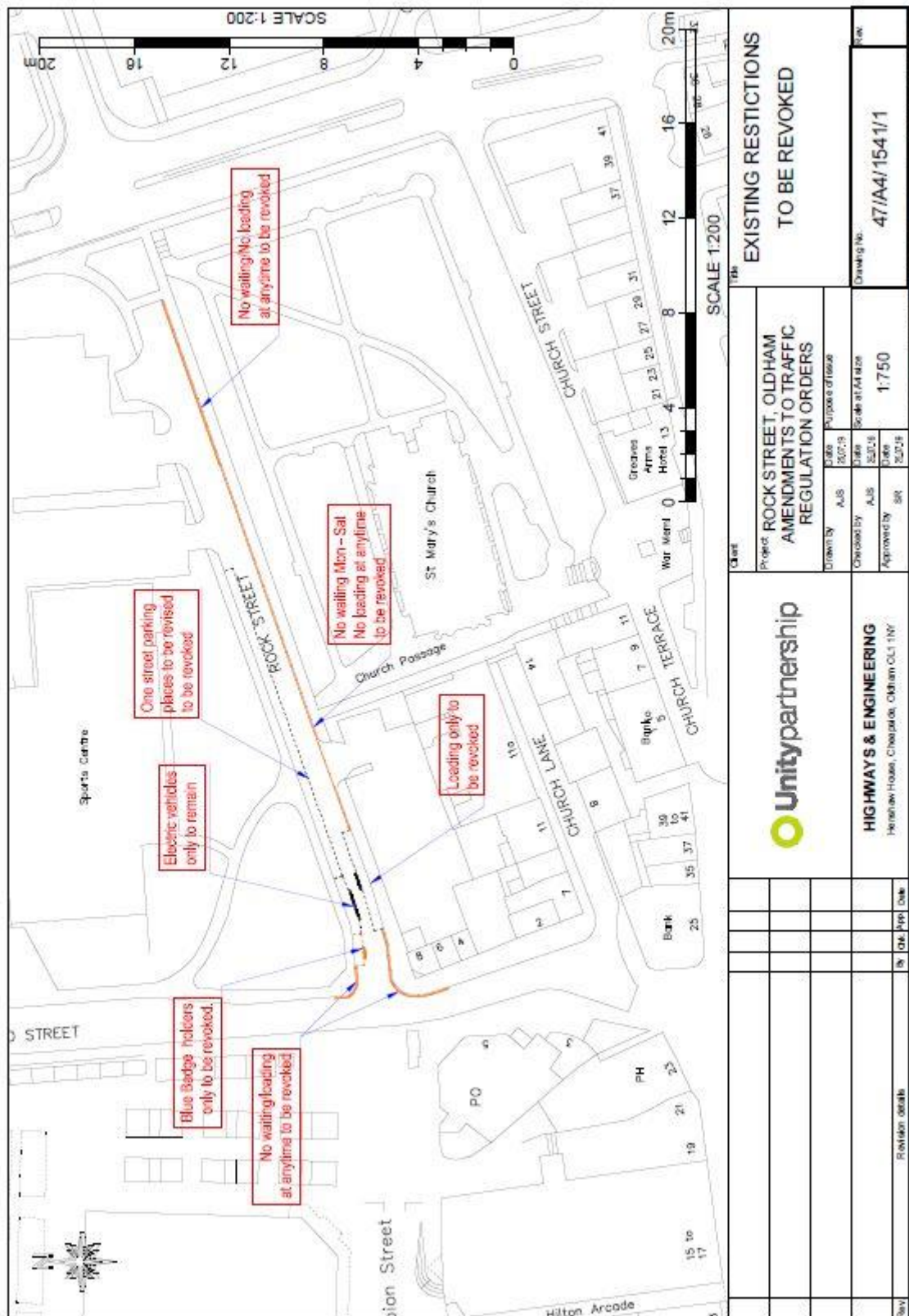
Part II Schedule 6

Parking Places (On Street)

Column 1 Item No	Column 2 Part Length of Road
	<u>Rock Street</u> (North side) From a point 16.5 metres east of its junction with Lord Street for a distance of 12.5 metres in an easterly direction
	<u>Rock Street</u> (North side) From a point 48.8 metres east of its junction with Lord Street for a distance of 49 metres in an easterly direction

APPROVAL

Decision maker Signe 	Dated 02.10.2019
In consultation with Signed  Director Of Environmental Services	Dated 02.10.19



										154		EXISTING RESTRICTIONS TO BE REVOKED		Rev	
												Project: ROCK STREET, OLDHAM AMENDMENTS TO TRAFFIC REGULATION ORDERS		Drawing No. 47/A4/1541/1	
												Drawn by AUS		Date 26/07/19	
												Checked by AUS		Date 26/07/19	
												Approved by SR		Date 26/07/19	
												Scale: A4 size		1:750	
												Purpose of Issue			
												Unitypartnership			
												HIGWAYS & ENGINEERING			
												Hereward House, Chappard, Oldham OL1 1NY			
												Revision details			
												No.		Date	
												Rev			

